

P1 Port Certifier Professional ver 2.0

P1C-003 v.2.0

Professional P1 port tester, certifier and protocol analyser.

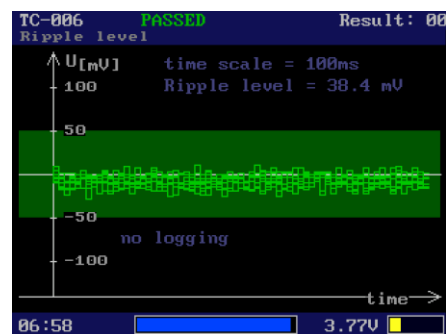


Description:

The P1C-003 device is designed to certify and test the P1 ports of Smart Meters. It enables automatic verification of key electrical P1 port parameters and checks correctness of the data packet. Tests can be performed automatically and their results stored in the device's memory. Separate PC application allows the printing of a Test Report from executed tests.

Key features:

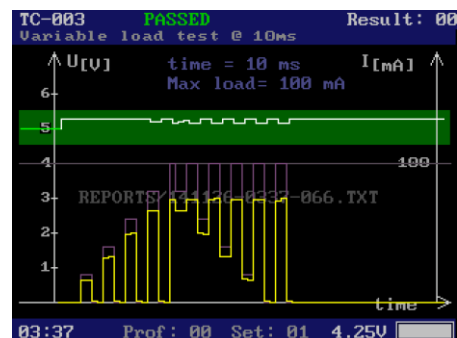
- 1 The device precisely measures and tests most of the electrical parameters of the P1 port
- 2 Precise "+5V line" voltage tests. (load, ripple and noise level tests)



- 3 Precise "+5V line" current tests e.g., maximal current, shot circuit current, inrush current



- 4 Able to simulate various P1 load conditions



5 “Data Request Line” tests

6 “DATA line” tests

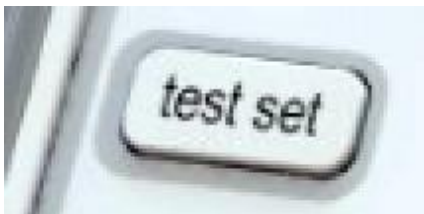


7 Parses and checks the correctness of the P1 data protocol

8 10 different fully configurable “Profiles”, with predefined settings for DSMR 2.2, DSMR 4.0 and ESMR 5.0

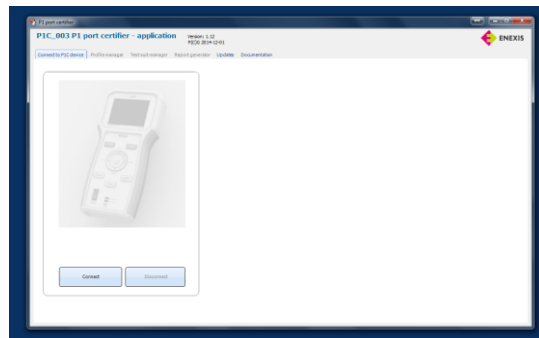


9 10 different, fully configurable “Test sets” (up to 20 “Test cases” in one test set)

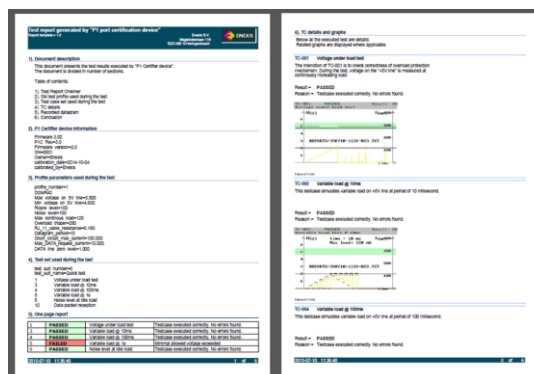


10 Can be connected as a mass storage device via USB

11 External PC application for editing “Profiles” and “Test Suits” as well as Test Report generation



12 Configurable “Test Reports” in .pdf format



13 Clear OLED display

14 Hi-capacity rechargeable LiPo battery on board (8 hours of work time without recharging)

15 Sound feedback

16 HW calibration port and SW calibration registers

17 Tested with all major smart meters available on the Dutch market