

Blue Pi-1 Universal

BP1-605-L

Universal Smart Meter Bluetooth interface and P1 port monitor.



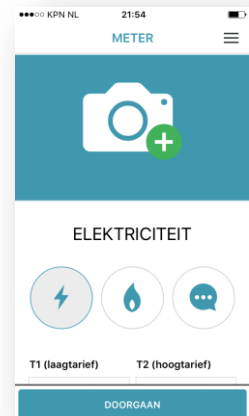
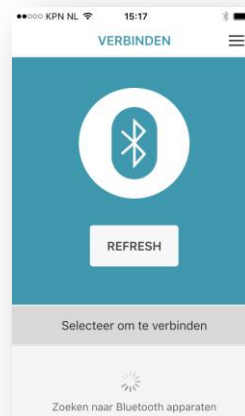
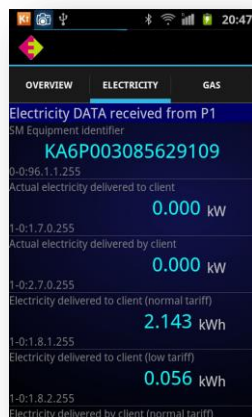
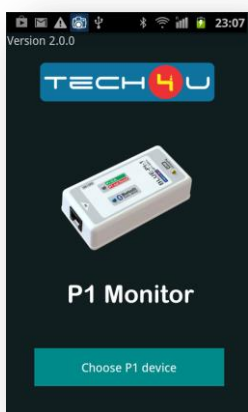
Description:

The main functionality of BLUE Pi-1 device is to parse and convert the data protocol available on the electricity smart meter P1 port and send it over a Bluetooth link to another device such as a Smart phone.

At the same time the device tests the correctness of the data sent by the smart meter and indicates the P1 port status via LED color.

Key features:

- 1** Parses and converts the P1 port data protocol. Indicates P1 port status via LED color.
- 2** Sends P1 port output over a Bluetooth link to another device such as a Smart phone.
- 3** Compatible with DSMR v 2.2, DSMR v 4.0 and DSMR 5.0
- 4** Dual mode Bluetooth – Standard BT and BLE (Bluetooth Low Energy).
- 5** Compatible with Android and iOS devices.
- 6** No external power supply needed. Powered by 380 mAh, LiPo battery
- 7** Rechargeable via micro-USB or from P1 port.
- 8** Low power consumption. From 30 to 40 mA
- 9** Smartphone applications for reading data via Bluetooth included (Android and iOS)



Example of Android and iOS applications